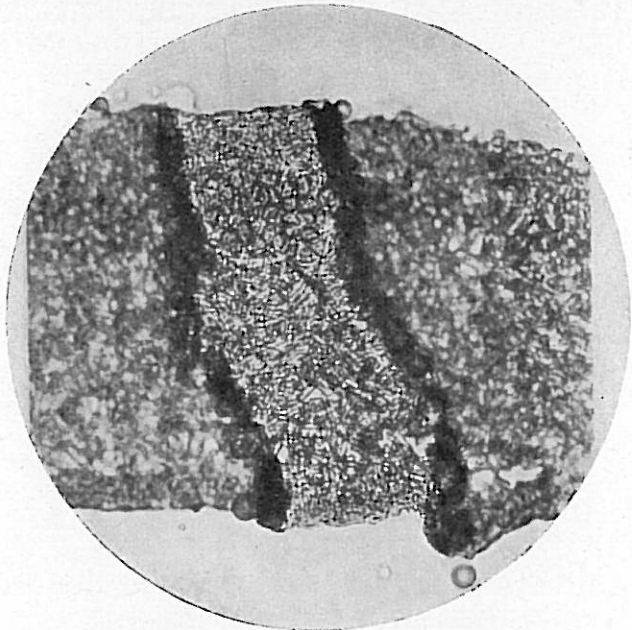


Figure 1.



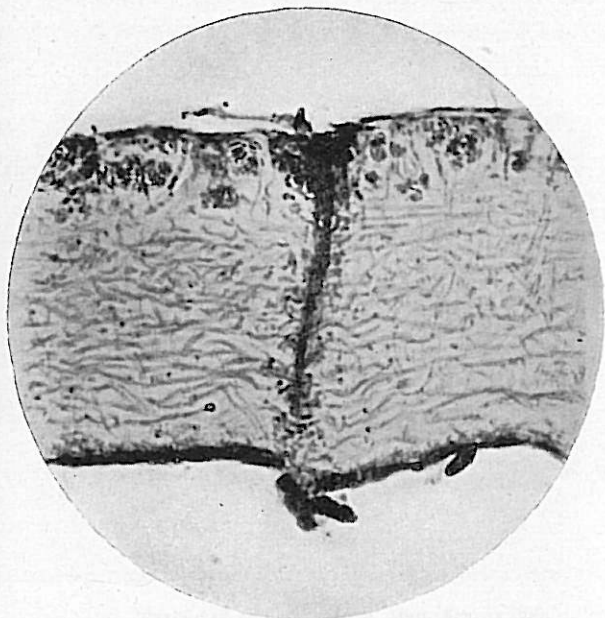
Absorption pore of *Parmelia tiliacea*, Ach., x 300.

Figure 2.



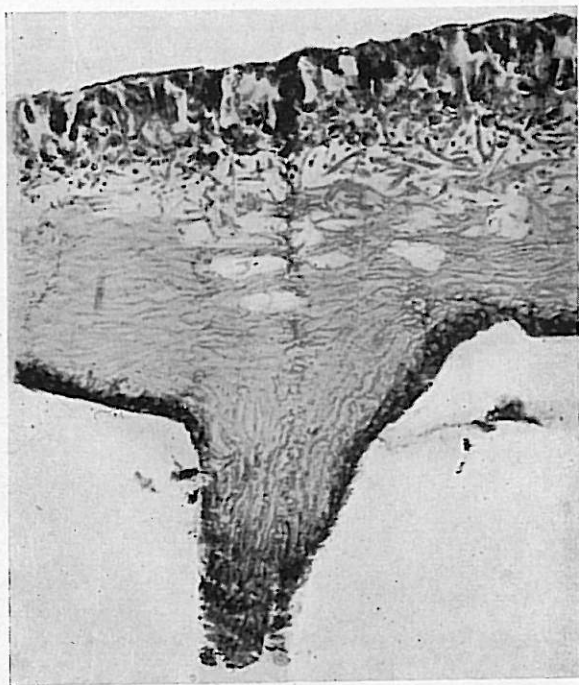
Absorption pore of *Parmelia placorhodioides*, Nyl., x 300.

Figure 3.



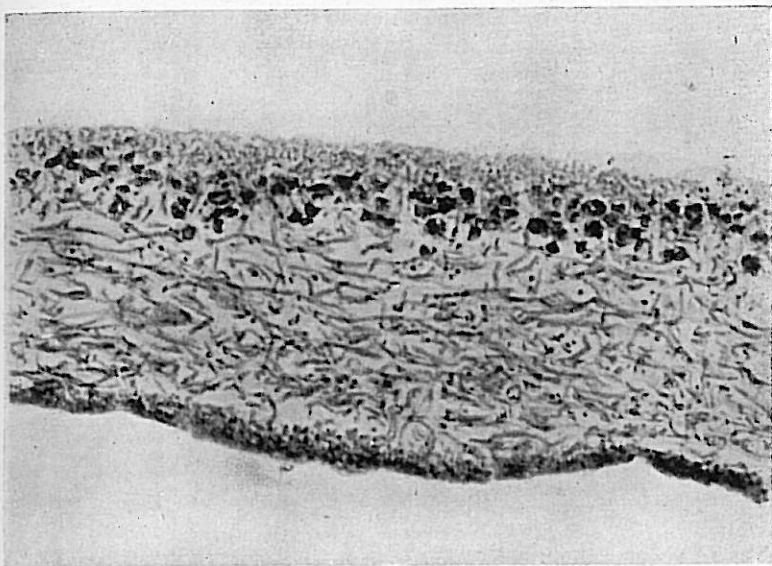
Absorbent pore of *Parmelia tinctorum*, L., x 300.

Figure 4.



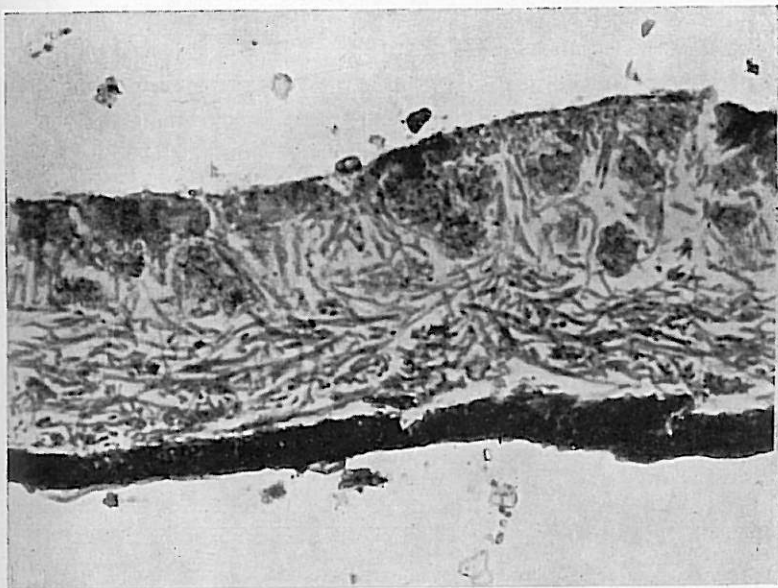
Absorbent pore of *Parmelia limbata*, Laur., x 300.

Figure 5.



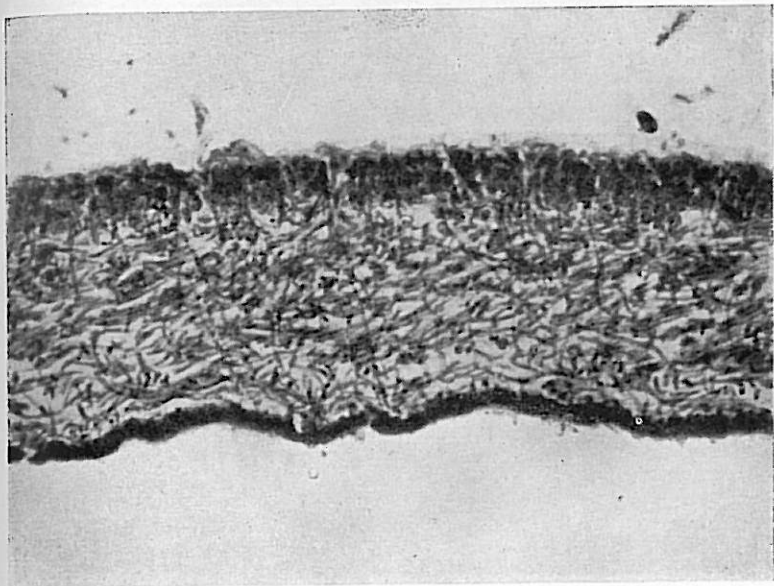
Thallus of *Parmelia laxa*, Mull. Arg., x 300.

Figure 6.



Thallus of *Parmelia cetrata* v. *sorcidiifera*, Wain., x 300.

Figure 7.



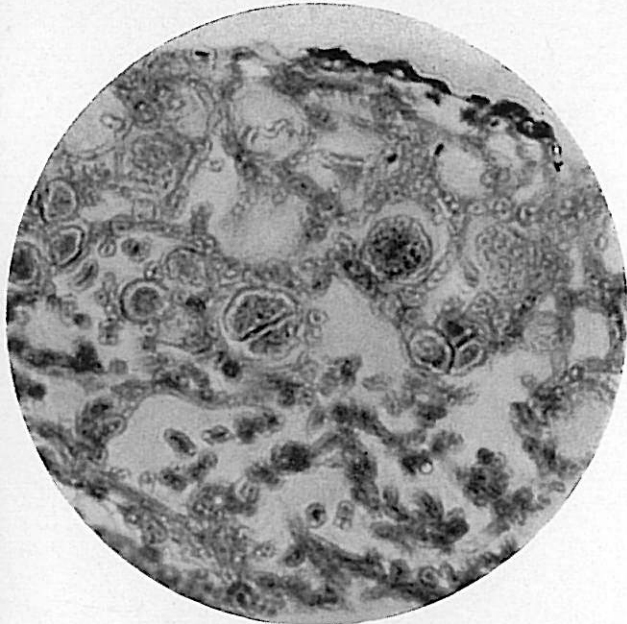
Thallus of *Parmelia latissima*, Fee, x 300.

Figure 8.



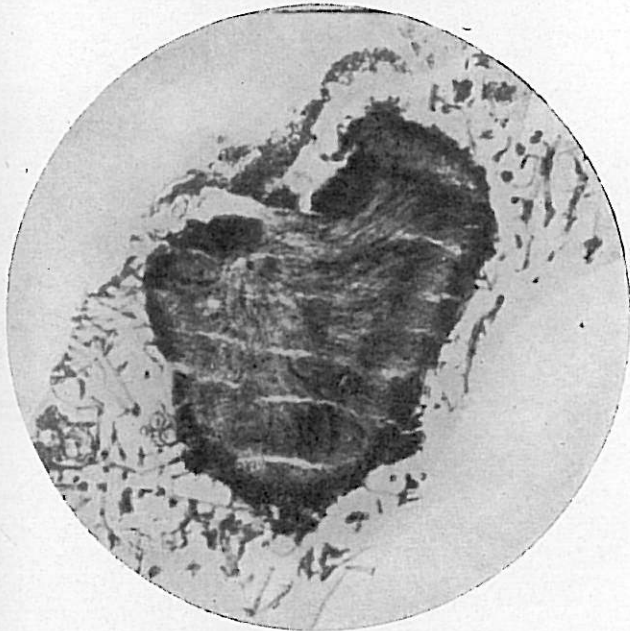
Symbiosis of hyphæ and gonidia, *Parmelia placorhodioides*, Nyl.

Figure 9.



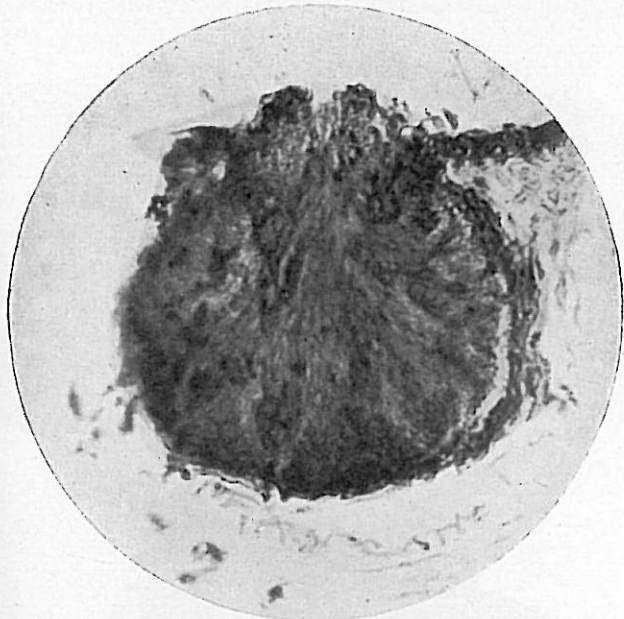
Gonidia (*Polycoccus*) in the act of dividing, x 770.

Figure 10.



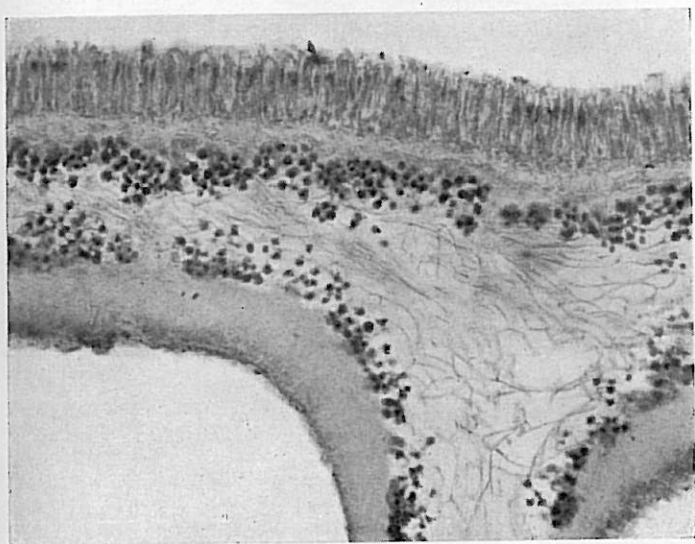
Section of Spermagonium, showing wall and remains of the original hyphal coil or scolecite, x 300.

Figure 11.



Spermagonium showing Ostiole, x 300.

Figure 12.



Apothecium of Lichen with double layer of Algae.